

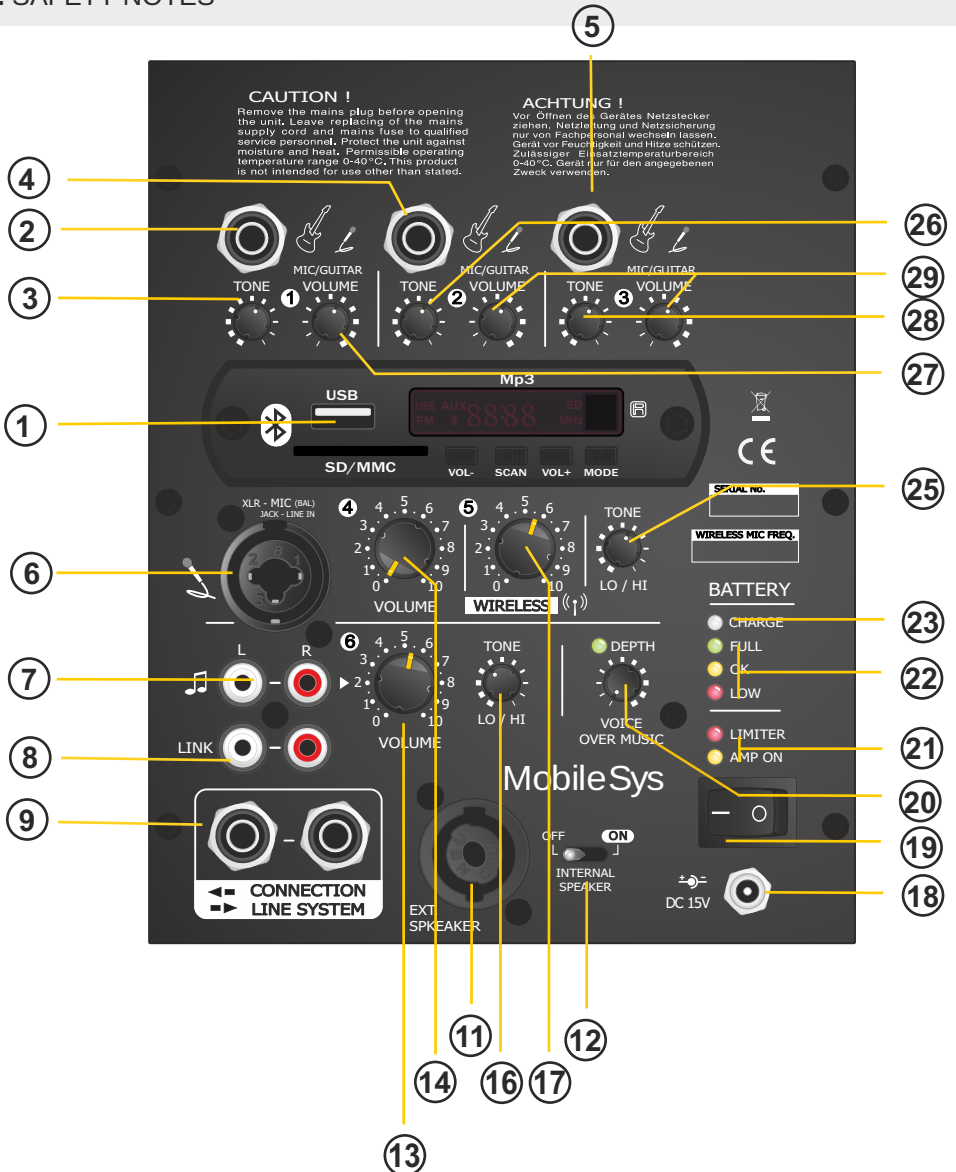
MobileSYS

Portable active system



Contents

1. REAR CONNECTION PANEL	2
2. OVERVIEW	3
3. GETTING STARTED	4
4. BATTERY	5
5. SAFETY NOTES	6



1. Player module BT/USB;
- 2./4./5. INSTR. - MIC / instruments input
Jack 6,3mm for channels 1, 2, 3;
- 3./16./25./26./28. Tone - Tone balance for channels 1-6;
6. MIC/LINE INPUT - combined
XLR/6.3 mm jack MIC/LINE IN to connect a microphone or an audio source with line level.;
7. INPUT AUX - RCA jacks LINE IN to connect an audio source with line level; when a stereo audio source is connected, a mono signal will be mixed in the amplifier;
8. LINK - RCA outputs MIX OUT to record the mixed signal or to route it to another amplifier system; for stereo recorders, two jacks are available;
9. Jack 6.3mm sockets to connect extra units of **MobileSys** and pass on the signal between them. In this system, regardless of the unit the input signal is connected to, it's present on all the devices being connected with the cables;
11. EXT. SPEAKER - socket designed for connecting an additional passive speaker:
4Ω - min. 60W
8Ω - min. 40W;
12. SPEAKER SWITCH - a switcher that turns off the internal speaker with the result that only the one connected to (11) will be audible
- 13./14./27./29. VOLUME - volume control level for channels 1, 2, 3, 4, 6;
17. VOLUME - volume control level for wireless receiver (option);
18. Socket to power supply / charge the battery. Only use the charger provided;
19. POWER - power switch;
20. VOICE OVER MUSIC - mutes the music from the device connected to (1/7) while speaking into a microphone (wireless or connected to (6))
LED MUSIC will light up when the music is muted
DEPTH knob adjusts the sensitivity for muting the music;
If the controller is turned to zero, the attenuation does not work.
21. Indicators:
- LIMITER - will light up when the volume level limiter is active. It prevents the sound from distortion
- AMP ON - power indicator for POWER ON;
22. BATTERY - LED status indicators for the rechargeable battery:
- FULL - charging state: full
- OK - the rechargeable battery is charged more than 75%
- LOW - the charge level of the rechargeable battery is less than 25 % - charging process should be performed;
23. CHARGE - will light up during the charge process
- red - the rechargeable battery is during the charge process
- green - the charge process is finished

Overview

The amplifier system MobileSYS is powered by a rechargeable battery and thanks to its other main feature - a rucksack, it can be carried during processions, for example. The amplifier is equipped with mixable inputs for a microphone, a (stereo) audio source with line level and an (optional) receiver for a wireless microphone.

It is possible to gradually or immediately mute the music while speaking to the microphone. With a fully charged battery, the system can operate for up to 14 hours. An internal chamber where a second battery can be placed and hooked up, makes it possible to double that time. Compartments for items such as microphones and cables are located in the rucksack.

Provided that all the systems concerned are equipped with the same wireless receiver, the wireless signal from the microphones can be simultaneously received by multiple MobileVoice devices. The feature allows the sound from the mics to be distributed to a much larger or elsewhere located area.

Getting started

1) Prior to initial switch-on, set all volume controls to "0" to avoid an unexpectedly high volume when the amplifier is switched on..

2) Switch on the the wireless transmitter and audio sources if any was connected.

3) Use the POWER switch (19) to switch on the amplifier. The LED power indicator AMP ON (21) will light up. In addition, the appropriate LED (22) will indicate the current charging state of the rechargeable battery. When the LED LOW lights up, the battery must be recharged.

4) Adjust the volume of the audio sources with the corresponding control.

WARNING Never operate the amplifier when the speakers are close to anybody's ears! The high volume may cause hearing damage. To avoid acoustic feedback (loud howling), never position the speaker towards the microphone and always make sure that there is a sufficient distance between the speaker and the microphone..

A level limiter will automatically prevent distortions at high volumes. The LED LIMITER (21) will light up when the limiter is active.

5) Use the control TONE to adjust the desired sound for the microphones or for an audio source connected to the device

6) To automatically mute music, for example, of an audio source connected to the player (1) during announcements via the microphone, adjust the DEPTH knob in such a way that the LED MUSIC will light up while speaking to the microphone.

7) To avoid unnecessary discharging of the battery, switch off the amplifier with the switch POWER (19) after operation or during longer pauses.

If the amplifier system is going to be idle for a longer period of time, fully charge the battery before storage and recharge it approx. every 3 months to prevent the battery from damage.

Battery

To recharge the built-in battery and an additionally connected battery, connect the power supply unit provided to the low-voltage jack (18) and to a mains socket (230V~/50Hz). The LED CHARGE (23) and the LED corresponding to the current charging state – FULL, OK or LOW – will light up and the battery will be recharged. The amplifier may be switched off during recharging..

When the battery has been recharged, disconnect the power supply unit from the amplifier and the mains.



Never put defective rechargeable batteries in the household waste. To protect the environment, always take them to a special waste disposal, e.g. collection container at your retailer.

Safety notes

Please observe the following items in any case: The unit is suitable for indoor use only. Protect it against dripping water and splash water, high air humidity, and heat (admissible ambient temperature range 0 – 40 °C).

1. Do not place any vessel filled with liquid on the unit, e. g. a drinking glass.
2. The heat generated within the unit must be carried off by air circulation. Therefore, do not cover the air vents.
3. Do not operate the unit and immediately disconnect the mains plug from the socket:
 - in case of visible damage to the unit or to the mains cable,
 - if a defect might have occurred after the unit was dropped or suffered a similar accident,
 - if malfunctions occur.In any case the unit must be repaired by skilled personnel.

Never pull the mains cable for disconnecting the mains plug from the socket.

- For cleaning only use a dry, soft cloth; never use chemicals or water.
- No guarantee claims for the unit and no liability for any resulting personal damage or material damage will be accepted if the unit is used for other purposes than originally intended, if it is not correctly connected, operated, or not repaired in an expert way.

ATTENTION!

Do not open the device or attempt to disassemble the internal parts or modify them in any way. The device contains no user-serviceable parts. If it should appear to be malfunctioning, discontinue use immediately and have it inspected by qualified LDM service personnel.



WARNING:

TO REDUCE THE RISK OF FIRE OR ELECTRIC SHOCK, DO NOT EXPOSE THIS EQUIPMENT TO RAIN OR MOISTURE, DO NOT REMOVE COVER. NO USER SERVICEABLE PARTS INSIDE, REFER SERVICING TO QUALIFIED PERSONNEL.



WARNING:

TO PREVENT ELECTRIC SHOCK DO NOT OPEN CASE. NO USER SERVICEABLE PARTS INSIDE.

ATTENTION!

Remove the electric plug from the outlet when the device is not to be used for extended periods of time, during electrical storms or when the device is under repair. When removing the electric plug from the device or an outlet, always hold the plug itself and not the cord. Pulling by the cord can damage it.



If the unit is to be put out of operation definitively, take it to a local recycling plant for a disposal which is not harmful to the environment.

Always follow the basic precautions listed below to avoid the possibility of serious injury or even death from electric shock, short-circuiting, damages, fire or other hazards

1. Do not:
 - expose the device to rain
 - use it near water or in damp or wet conditions
 - place containers on it containing liquids which might spill into any openings.
2. Do not expose the device to excessive dust or vibrations, or extreme cold or heat (such as in direct sunlight, near a heater, or in a car during the day)
3. Use only the power cord delivered by the manufacturer.
4. If this device appears to be damaged, immediately turn off the power switch, disconnect the electric plug from the outlet, and have the device inspected by qualified LDM service personnel.

